

MEDICATION SAFETY

STORAGE AND LABELLING OF INSULIN: INSULIN CARTRIDGE AND PEN INJECTION DEVICES

PURPOSE

- To ensure appropriate storage of inpatient's prescribed insulin to guarantee efficacy of the medication is maintained.
- To provide a clear and consistent guideline to all wards to ensure inpatient's insulin is stored correctly

Key Point

- Medications must be stored and administered in accordance with the manufacturer's and pharmacist's recommendations regarding temperature, exposure to light and expiry dates.

BACKGROUND

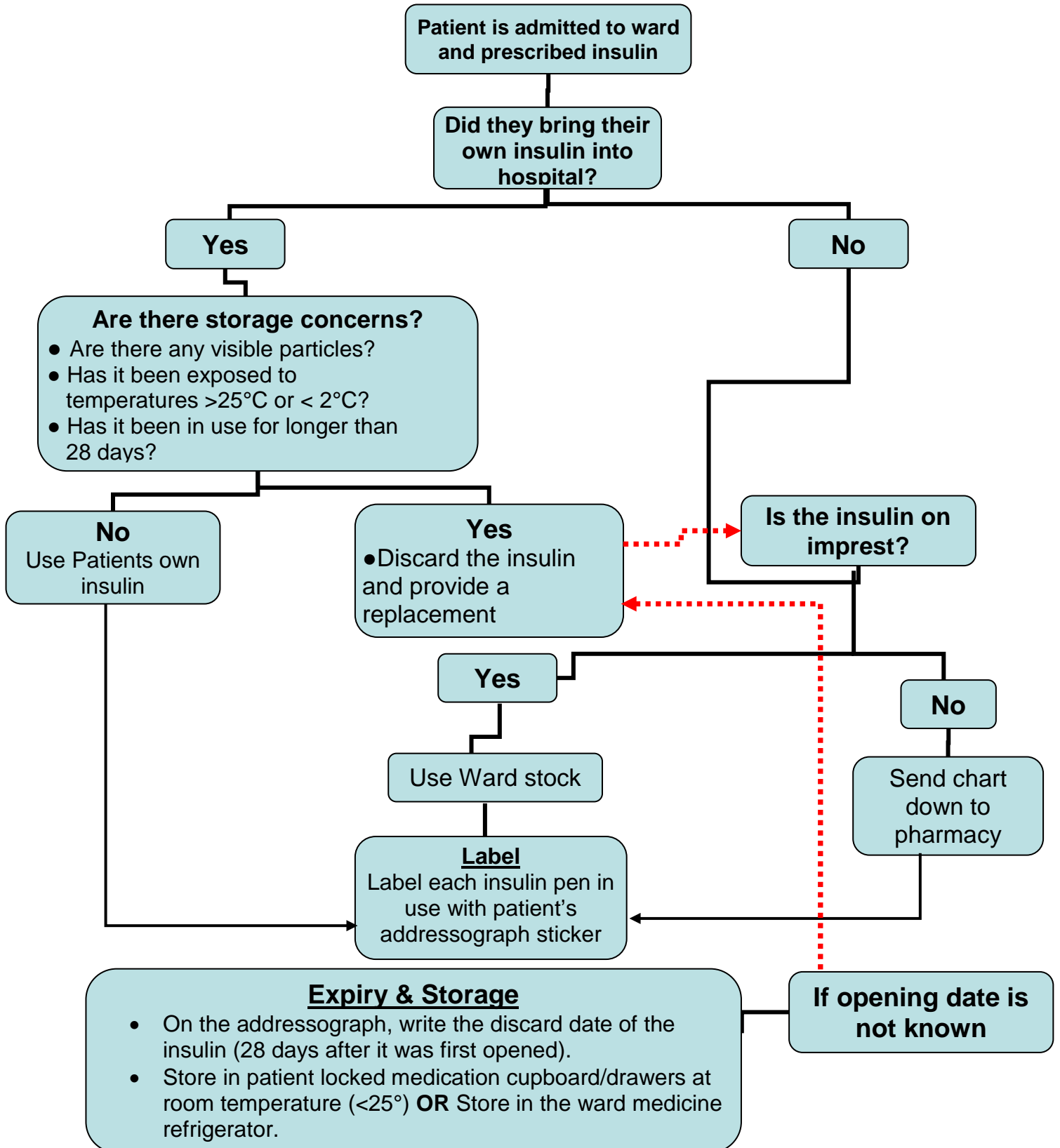
Cold chain supply ensures refrigerated medicines are stored at the World Health Organisation recommended temperature of between 2 and 8 degrees. Any breach in the cold chain can potentially result in chemical and or physical changes to the medication which may lead to a loss of efficacy and alter patient response and potentially cause harm to patients. In the event of a cold chain breach, medications must be discarded. It is essential that the pharmacy and wards involved in the handling of refrigerated medications for patient use maintain optimal conditions to provide a quality product to the patient.

PROCEDURE

Storing Insulin for an Inpatient

- Before use, keep the unopened insulin in a refrigerator where the temperature is between 2-8°C. Do not allow it to freeze. Discard if frozen.
- Once in use, the insulin should be kept in the refrigerator on obstetric wards or below 25°C in the patient drawer in all other wards.
- Discard the insulin within 28 days of first use.
- If the insulin is to be stored in the patient's drawer write the date it is to be discarded on the addressograph label.
- Do not leave it near heat or in direct light.

STORAGE AND LABELLING OF INSULIN





REFERENCES (STANDARDS)

Queensland Health (AU) Guideline for the Storage, Transportation and Handling of Refrigerated Medicines, Vaccines, and Blood in Queensland Health Facilities [Internet]. Brisbane, QLD (Australia): Queensland Government (AU); 2008 [updated 2011 Apr 19; cited 2014 Jan 31]. Available from:
<http://www.health.qld.gov.au/immunisation/documents/guide-vaccine-storage.pdf>

National Standards – 4.3 The Clinical Workforce is supported for the prescribing, dispensing, administering, storing, manufacturing, compounding and monitoring of medicines
Legislation - Nil

Related Policies - Nil

Other related documents – Nil

RESPONSIBILITY

Policy Sponsor	HOD Pharmacy
-----------------------	--------------

Initial Endorsement	April 2014
----------------------------	------------

Last Reviewed	
----------------------	--

Last Amended	
---------------------	--

Review date	April 2017
--------------------	------------

**Do not keep printed versions of guidelines as currency of information cannot be guaranteed.
Access the current version from the WNHS website**