

Leaving the hospital

You may go home as soon as practicable providing there are no medical reasons that require you to stay.

A Hospital Midwife may visit you at home, if required. You should see your GP / Obstetrician / Midwife six weeks after the birth, or sooner as required, to ensure that your recovery is progressing well.

Perinatal Loss Clinic

For King Edward Memorial Hospital patients the Perinatal Loss Clinic has been established to provide information and ongoing support to you and your family following the loss of your baby.

The team comprises an Obstetrician, Midwife, Paediatrician, Pastoral Care representative, Social Worker, Perinatal Pathologist and Psychologist.

The Perinatal Loss Clinic Midwife coordinator can be contacted for further information.

Telephone: (08) 9340 2222 page 3430 or
(08) 9340 2128

Mobile: 0416 019 020

Disclaimer: The advice and information contained herein is provided in good faith as a public service. However the accuracy of any statements made is not guaranteed and it is the responsibility of readers to make their own enquiries as to the accuracy, currency and appropriateness of any information or advice provided. Liability for any act or omission occurring in reliance on this document or for any loss, damage or injury occurring as a consequence of such act or omission is expressly disclaimed.

Produced by: Grief and Loss Council

Email: ogccu@health.wa.gov.au

Website: <http://wnhs.health.wa.gov.au>

© July 2006 WNHS 0101 Rev 4
Revised May 2014

This information is available in
alternative formats upon request

WOMEN AND NEWBORN HEALTH SERVICE

King Edward Memorial Hospital

374 Bagot Road Subiaco WA 6008

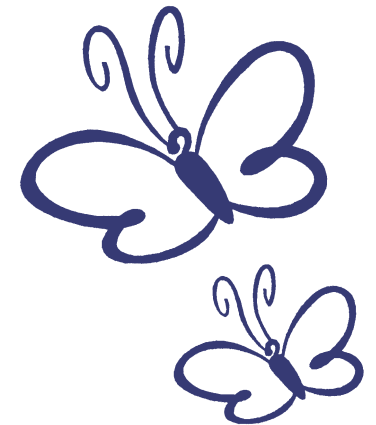
Telephone: (08) 9340 2222



Government of Western Australia
Department of Health

After the Death of Your Baby

INFORMATION FOR PARENTS



Information for parents

This brochure comes to you at a time when you may be experiencing a wide range of feelings and trying to make decisions that are both important and unexpected.

The staff at KEMH acknowledge your loss and offer our condolences. We want to assist you by providing information that will help you understand our philosophy of care as well as support and provide comfort to you and your family.

There is no requirement to make hasty decisions. Your partner or a close relative is welcome to stay with you. You may invite relatives and/or friends to see and spend time with you and your baby.

Memories are very precious and we support families to create these by spending time with their baby. As this may be a new and emotional experience please feel comfortable to change your mind at any time. The staff will take photographs of your baby soon after birth and can assist you to bath, weigh and dress him/her, if you wish.

Mementoes of your baby, such as hand and footprints, cot card and nameband will be collected and provided to you. We will also provide quilt and clothes for your baby or you can provide your own. Naming your baby and taking family photographs may also become treasured memories for you and your family.

Your care team

Midwives (08) 9340 2128	A midwife will care for you each shift, and where possible, the same ones will care for you each day until you return home.
Doctors (08) 9340 2128	Several doctors will be caring for you. Their responsibilities include providing medical care and discussing possible reasons for your loss.
Pastoral Care Team (08) 9340 1036 (08) 9340 1726 page 1294	This team can help meet the spiritual and religious needs of you and your family, including offering appropriate rituals and expressions for your baby.
Social Worker (08) 9340 2777	The social worker can provide emotional support and information on the grief process and funerals, and assist with contacting support services and resources as required.
Psychological Medicine (08) 9340 1521	Clinical psychologists and psychiatrists can provide emotional support and strategies for adjusting to the death of your baby.
Perinatal Pathology (08) 9340 2730	Perinatal Pathology staff will care for your baby's body and provide additional mementos of your baby, when requested. If you have given consent they will perform the post-mortem examination and provide follow up information.
Genetic Services (08) 9340 1525	This team provides information, counselling and support following the diagnosis of a genetic condition, including the implications for future pregnancies.
Perinatal Loss Service (08) 9340 2222 page 3430 or (08) 9340 2128 M: 0416019020	The midwife coordinator will contact you to arrange an outpatient appointment at the Perinatal Loss Clinic, six to eight weeks following the birth of your baby.

Information and resources

Grief pack

This is yours to keep. It contains important information and a commemorative book for mementoes.

Registration papers

If your baby's gestational age is over 20 weeks you are legally required to register your baby with the Registry of Births, Deaths and Marriages - forms will be provided after the birth.

Government assistance

You may be eligible for a Centrelink payment. The social worker can help you with these forms if needed.

Post-mortem examination

You may be asked to consider a post-mortem examination of your baby. The doctor will discuss the benefits with you. The post-mortem coordinator is available to discuss any further questions.

Funeral arrangements

The Chaplain or Pastoral Care representative and the Social Worker can provide information and discuss options for funeral arrangements.