



CLINICAL PRACTICE GUIDELINE

Guideline coverage includes NICU KEMH, NICU PCH and NETS WA

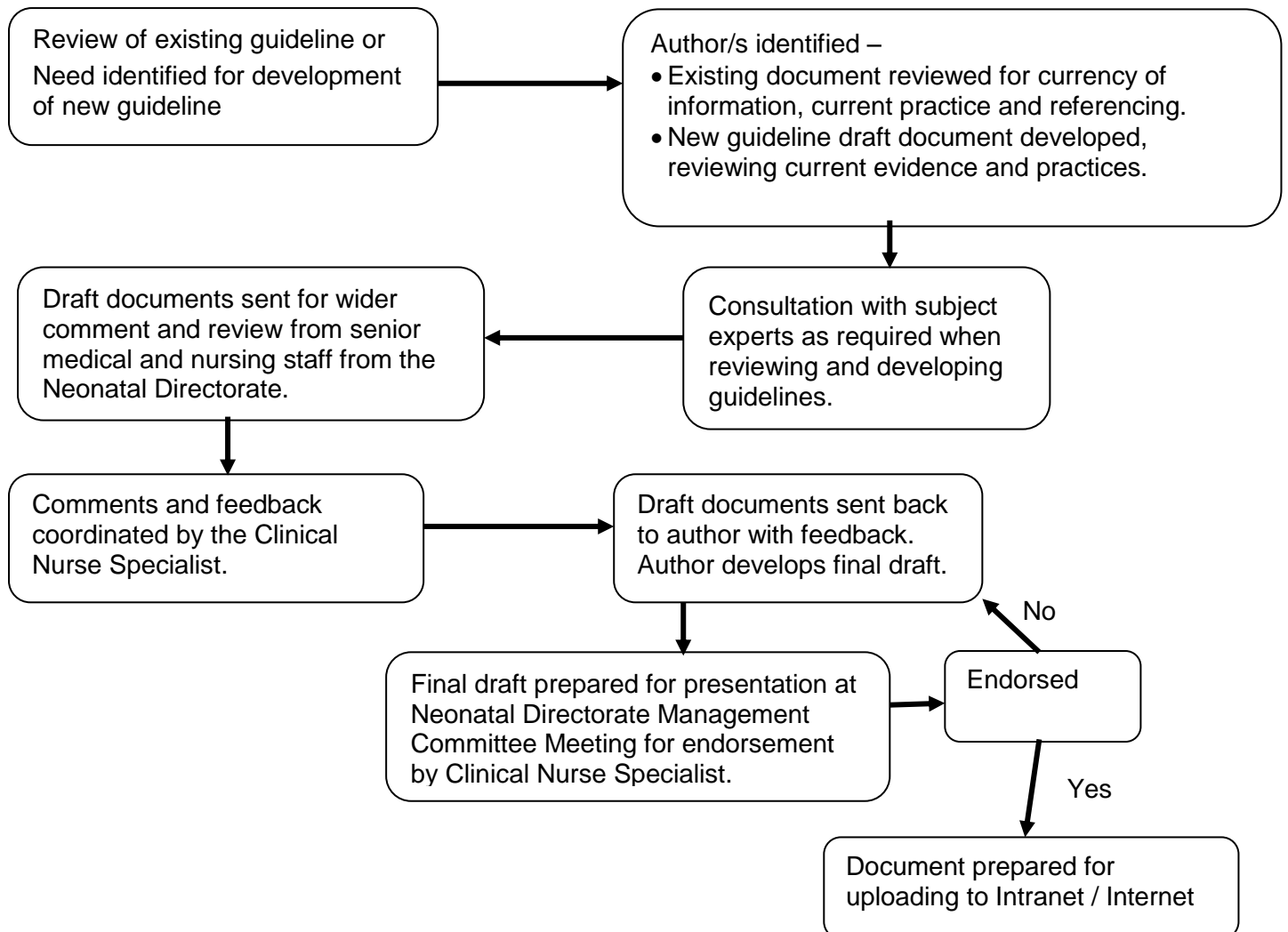
Clinical Guidelines: Development and Review Process

This document should be read in conjunction with the [Disclaimer](#)

Neonatal clinical guidelines are reviewed and developed to reflect best practice. Guidelines are reviewed every 3 years or when there is evidence to change practice by way of clinical audit, new evidence from research and literature or post clinical incident/recommendations from RCA.

Neonatal clinical guideline review and documents are coordinated by the Clinical Nurse Specialist – Guidelines and Quality.

Clinical Guideline Review Flowchart



Endorsed documents are prepared as per WNHS naming conventions on the approved guideline template.

Neonatal Directorate clinical staff are notified of reviewed guidelines and changes to practice.

- List of reviewed guidelines is emailed to all staff.
- List of reviewed guidelines is posted on the HealthPoint Neonatal Directorate workspace.
- Published on WNHS HealthPoint [Policy and Guideline Updates](#) page.
- Where there is a change in practice a Change of Practice form completed and communicated to clinical staff.

Neonatal Guideline database is maintained and updated by the Clinical Nurse Specialist.

Hard copies of neonatal clinical guidelines are updated and maintained by the Clinical Nurse Specialist (to be used only when electronic access is down).

- One copy in SCN3 (KEMH)
- One copy in resource cupboard PCH
- One copy in CNC office (KEMH)

Related WNHS policies, procedures and guidelines

WNHS: [Policy Introduction, Review and Dissolution](#)

Document owner:	Neonatal Directorate Management Committee		
Author / Reviewer:	Neonatal Directorate Management Committee		
Date first issued:	August 2014		
Last reviewed:	22 nd October 2018	Next review date:	22 nd October 2021
Endorsed by:	Neonatal Directorate Management Committee	Date endorsed:	22 nd January 2019
Standards Applicable:	NSQHS Standards: 1  Governance		

**Printed or personally saved electronic copies of this document are considered uncontrolled.
Access the current version from the WNHS website.**