

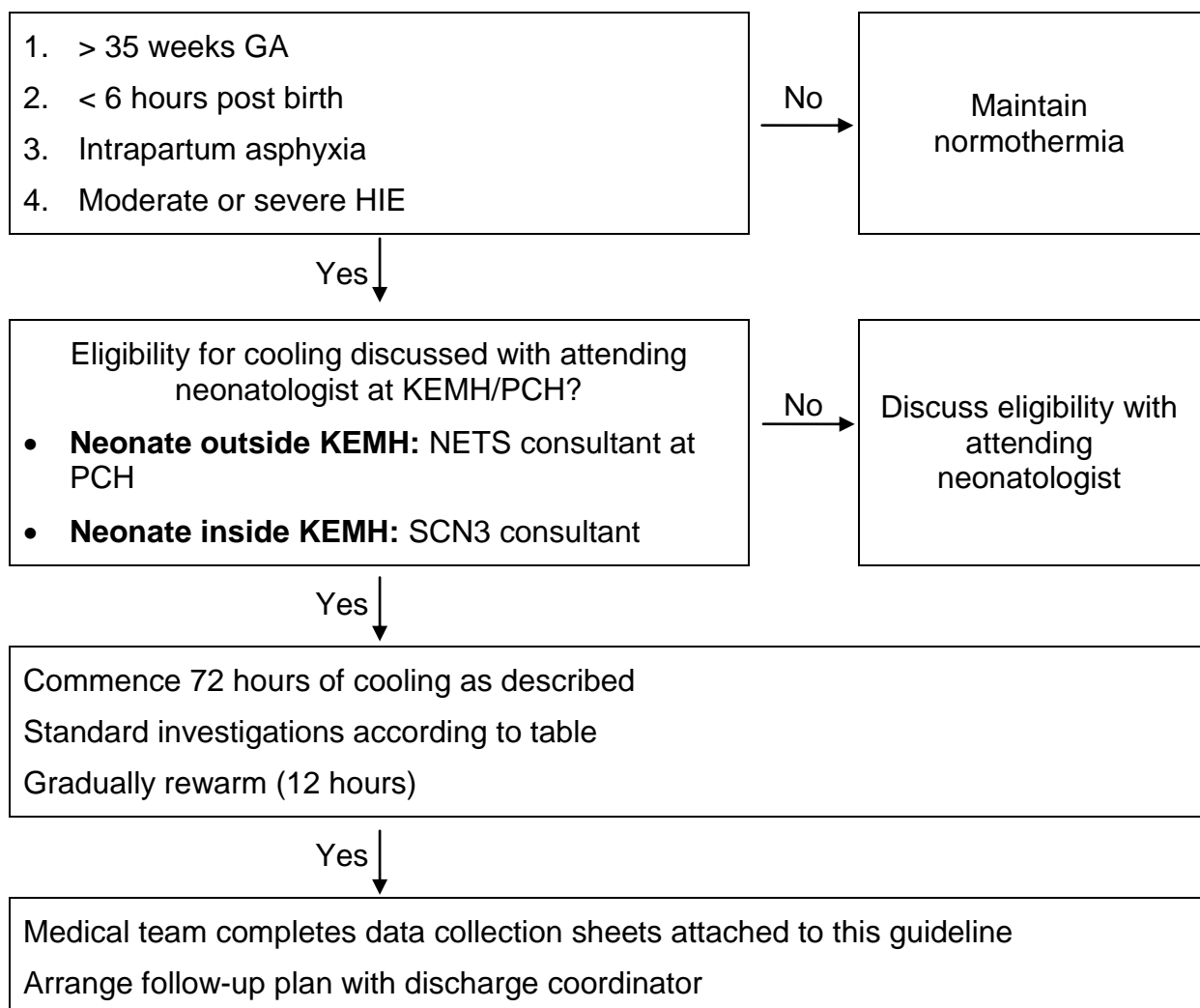


CLINICAL PRACTICE GUIDELINE

Guideline coverage includes NICU KEMH, NICU PCH and NETS WA

Cooling Guideline: Quick Reference Guide, Management and Investigations

This document should be read in conjunction with the [Disclaimer](#)



Cooling Guideline: Quick Reference Guide, Management and Investigations

Document owner:	Neonatal Directorate Management Committee		
Author / Reviewer:	Neonatal Directorate Management Committee		
Date first issued:	December 2012		
Last reviewed:	1 st October 2014	Next review date:	1 st October 2017
Endorsed by:	Neonatal Directorate Management Committee	Date endorsed:	October 2014
Standards Applicable:	NSQHS Standards: 1  Governance		
<p>Printed or personally saved electronic copies of this document are considered uncontrolled.</p> <p>Access the current version from the WNHS website.</p>			